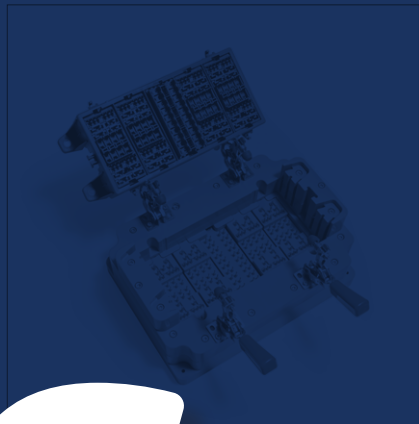
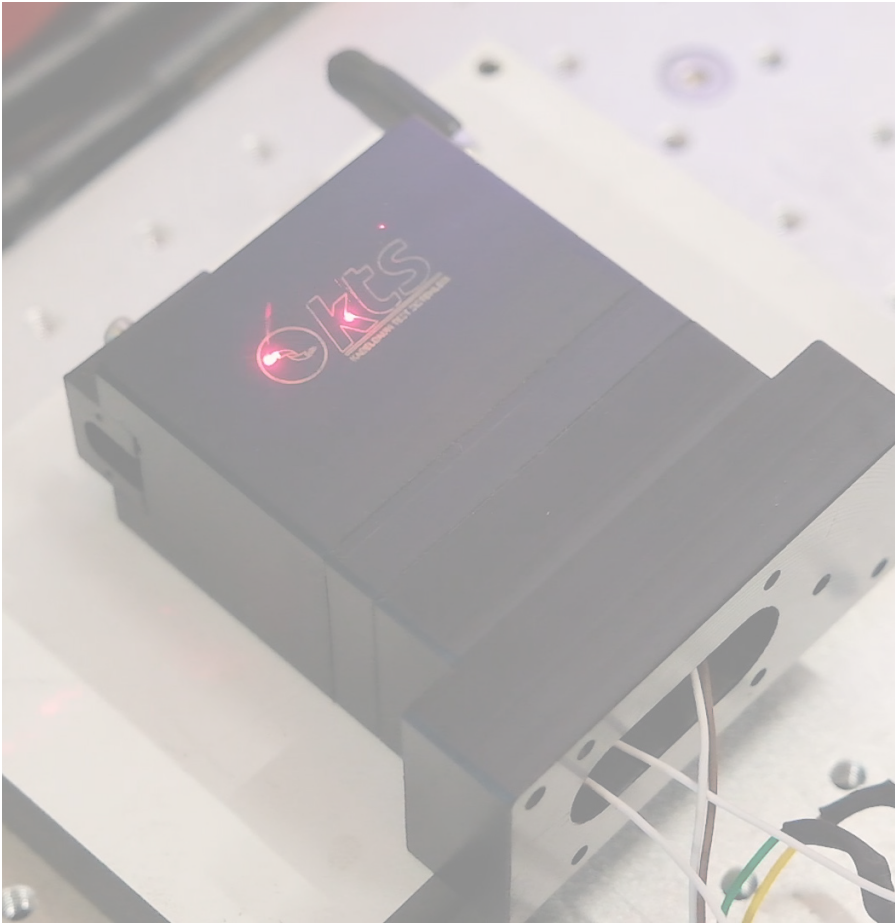
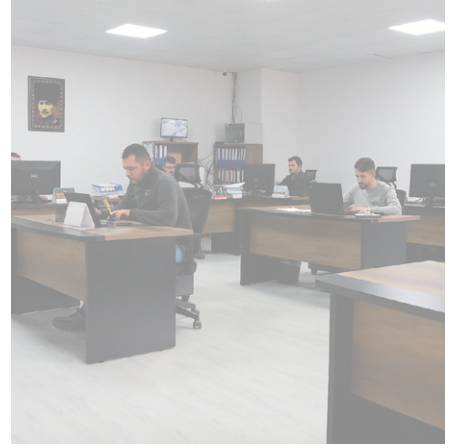
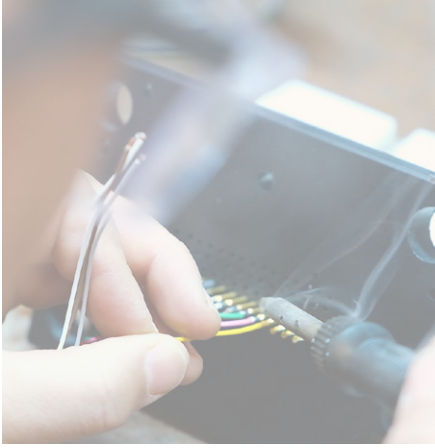
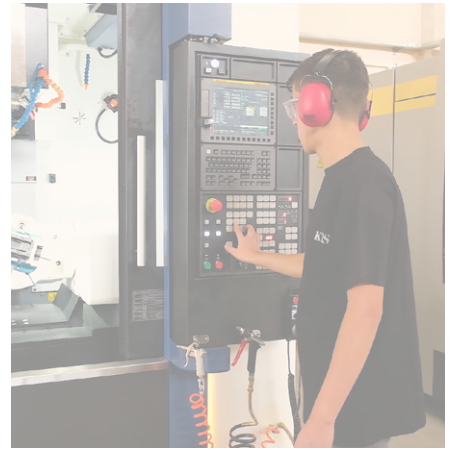




kts

KABELBAUM TEST SYSTEMS







About Us

KTS Kabelbaum Test Systems started its operations in 2019 in Bursa, Turkey within a 2000 m² closed area. We set out to meet the needs of wiring harness manufacturers and become a solution partner. Our mission is to provide solutions that can meet the specific needs of the sector with the highest quality, shortest delivery time and lowest cost.

Our focus is on providing the best service to the sector by designing and producing sustainable and durable test modules, assembly modules, and boards.

Customer Satisfaction:

Our goal is to understand customer needs and provide solutions, aiming to meet each customer's request with the flexibility of products and services tailored to these needs.

High Quality:

The quality of our products reflects our commitment to providing reliability and durability to our customers. By maintaining

the highest quality standards, we offer long-lasting and reliable products.

Low Cost:

Cost-effectiveness is achieved through continuous improvements and market research, contributing to the production of budget-friendly solutions.

Fast Delivery:

Fast delivery is a priority. We deliver products within the specified timeframe.

Within our organization:

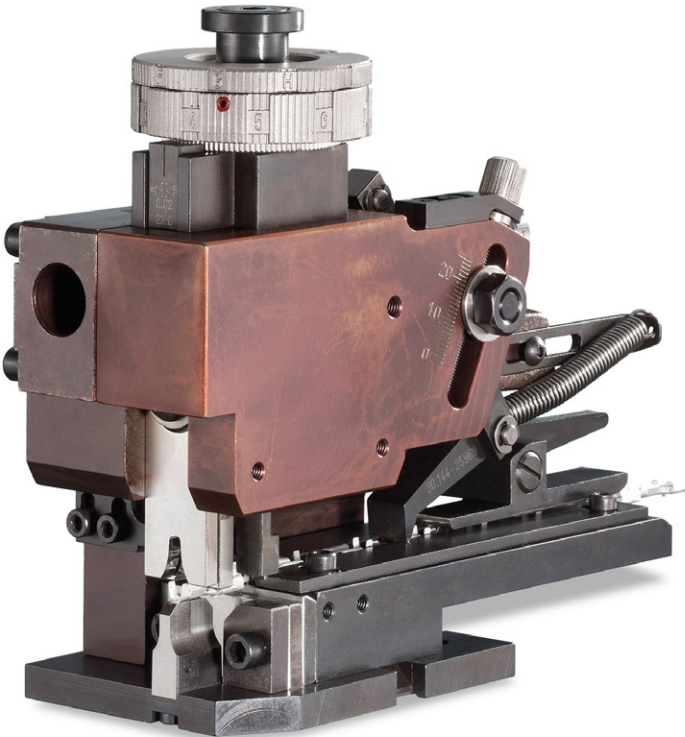
A design team consisting of 5 engineers and 5 technicians.

A production team consisting of 3 technicians and 20 employees.

6 CNC machining centers, one of which is a 5-axis, 1 wire erosion machine, 1 grinding machine, and 3 milling machines for mold-making.

PRODUCTION ACCESSORIES

- Conveyor-Assembly Boards and Accessories
- Crimping Applicators.
- Terminal Extraction Tools.



TA 1100



TA 1100 Inclined Test Table is designed to ergonomic standards for standing work. It is used for testing wiring harnesses. It is produced with different sizes and component options to meet customer requirements. (TA 1600, TA 2100, TA 2600, TA 3100, TA 3600)

Features	Equipment	Test Area Dimension	Overall Dimension
<p>Test table with a 15° incline for ergonomic use.</p> <p>Ability to be disassembled and transferred.</p> <p>Standardized interfaces.</p>	<p>Test Module (Custom design for each wiring harness or connector).</p> <p>Connection cards.</p> <p>Electrical power and air conditioner supply.</p> <p>Emergency stop button.</p>	<p>10x6 Grid (Each grid size is 100x100mm, the number of grids can be increased as desired.)</p> <p>1000x600x600mm</p>	<p>1100x975x1200mm(With the wheels)</p>

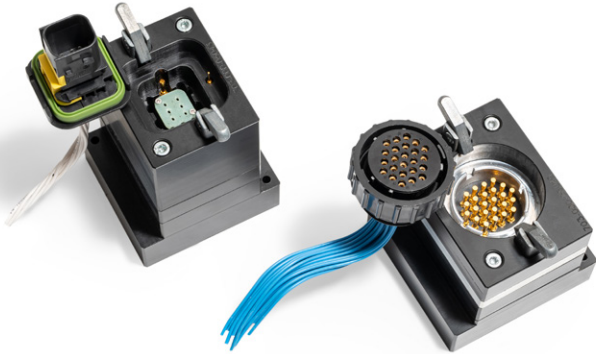
TA 1100-HV



**TT 1100-HV Test System is designed for testing high-voltage cables and ensuring quality control. It is produced with different sizes and component options to meet customer requirements.
(TT 1600, TT 2100, TT 2600, TT 3100, TT 3600)**

Features	Equipment	Test Area Dimension	Overall Dimension
<p>Ergonomic use of the test table.</p> <p>Ability to be disassembled and transferred.</p> <p>Standardized interfaces.</p>	<p>Test Module (Custom design for each wiring harness or connector).</p> <p>Connection cards.</p> <p>Electrical power and air conditioner supply.</p> <p>Emergency stop button.</p> <p>Light barrier.</p> <p>Protective frame.</p>	<p>10x6 Grid (Each grid size is 100x100mm, the number of grids can be increased as desired.)</p> <p>1000x600x600mm.</p>	<p>1100x750x1050mm (With the wheels)</p>

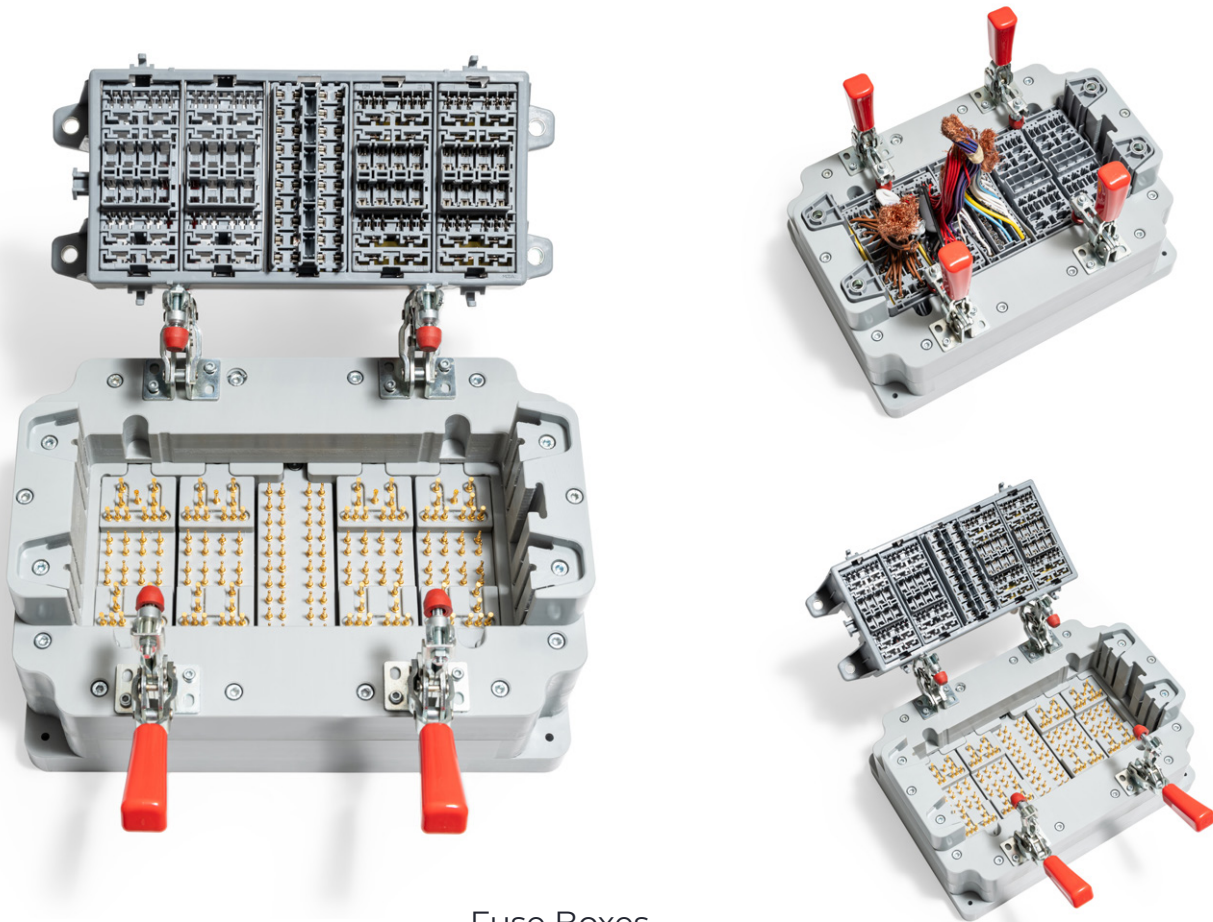
MECHANICAL MODULES



Standard Mechanical Modules



ECU Modules



Fuse Boxes

In mechanical modules, the locking process is done with equipment such as a latch, clamp, etc. Testing is completed by performing terminal and presence checks on the locked connector. When necessary, the aluminum contour is processed to ensure it does not fit into other sockets of the same family. In male terminal sockets, sieve processing is done to check the inclination of the terminals.

COMPONENT TEST



Grommet Modules



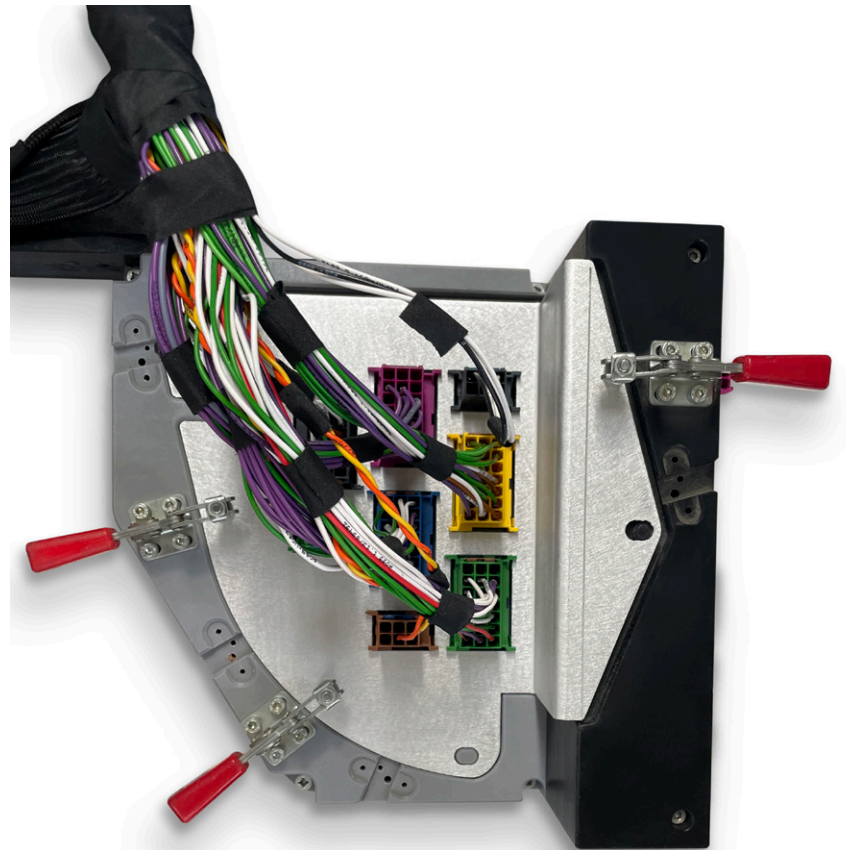
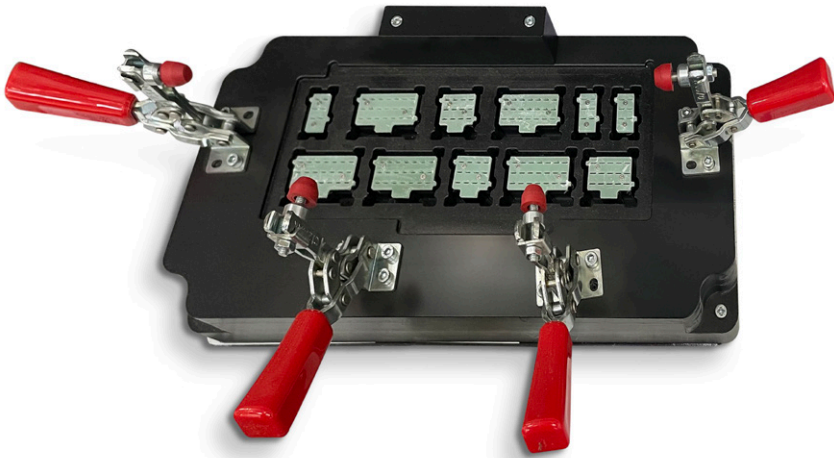
Clip Modules



Manifold Modules

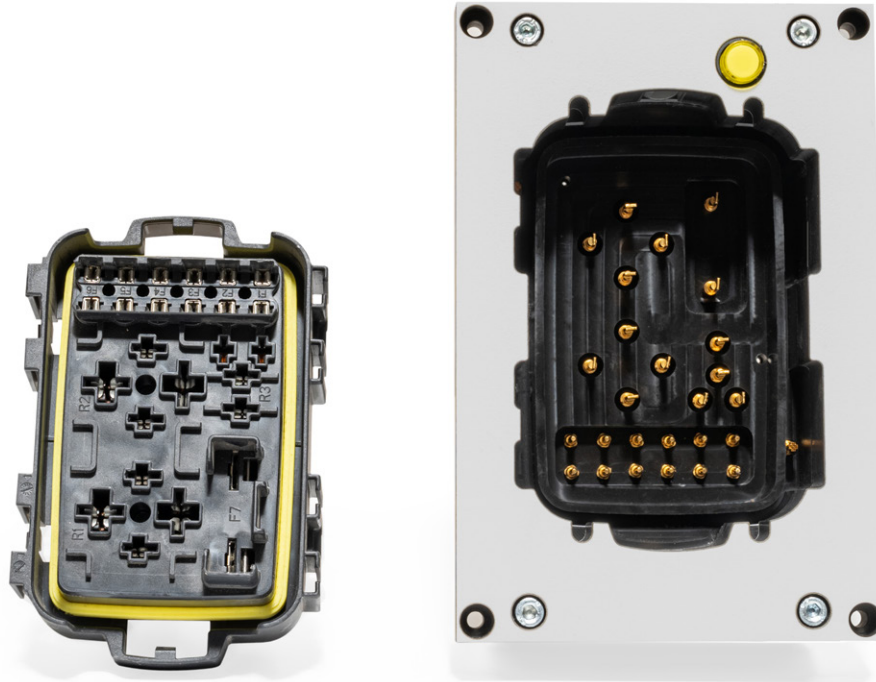
Geometric and presence checks are performed on all components such as clips, grommets, brackets, manifolds, and other parts used in the wiring harness, apart from connectors.

SPECIAL DESIGN



These are products specially designed and manufactured by an experienced design team to meet the specific requirements of customers.

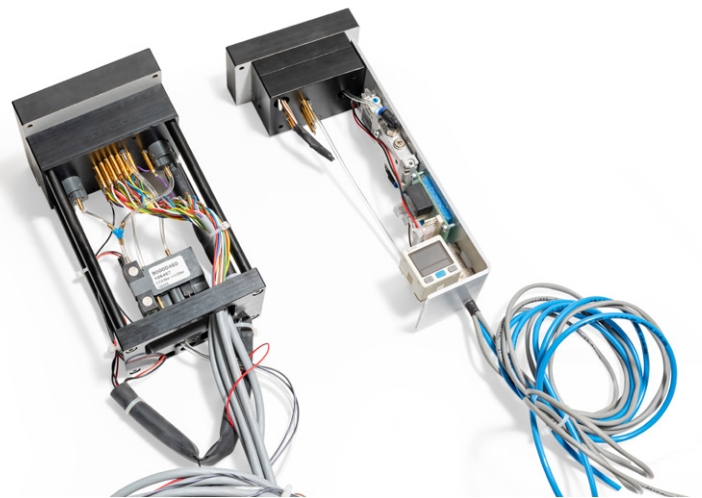
PNEUMATIC TEST MODULES



Pneumatic Test Modules



Push-back Modules

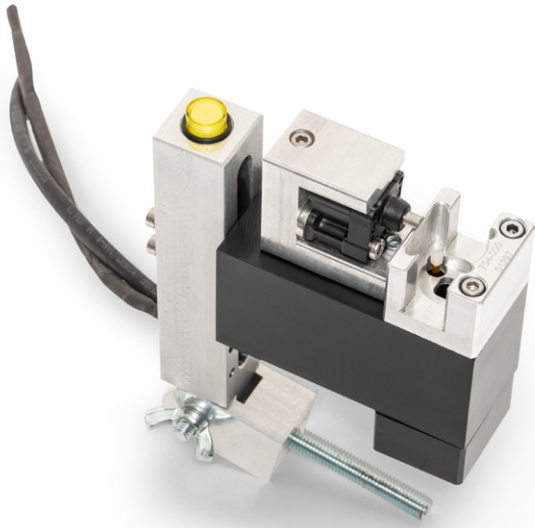


Pneumatic Test Modules

In pneumatic modules, the presence of a socket triggers the automatic locking and releasing process through pistons.

- Push-back module for detecting pin-out errors,
- Leakage module for conducting airtightness or vacuum tests.

PNEUMATIC TEST MODULES



Clip Checker

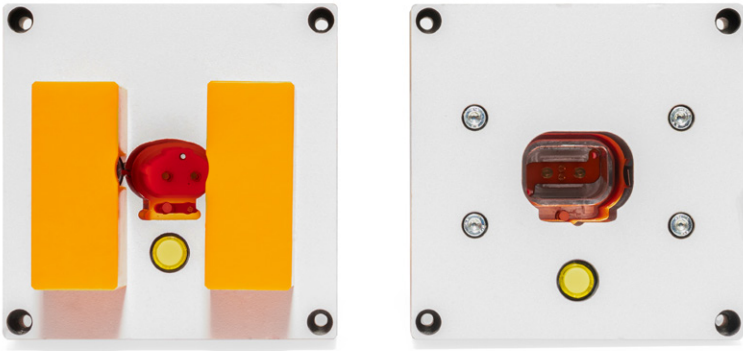


Clip Checker



Pneumatic Test Modules

HIGH VOLTAGE TEST MODULES



High Voltage Modules



High Voltage Modules



High Voltage Modules

These are test modules used for tests on connectors used in high voltage installations.

SQR CERTIFICATION



Sertifika

CERTIFICATE

KTS KABELBAUM TEST SİSTEMLERİ ANONİM ŞİRKETİ

CERRAH MAH. 3. SANAYİ CAD. NO: 5 İNEĞÖL/ BURSA/ TÜRKİYE

ISO/IEC 27001:2013

Kapsam/Scope

ELEKTRİK DEVRELERİNİN ANAHTARLANMASI, KORUNMASI VE ELEKTRİĞİN KONTROL VE DAĞITIMINA ÖZGÜ CİHAZLARIN PARÇALARININ İMALATI (KUMANDA PANOSU İÇİN TABLO, KONSOL, KABİN VE DİĞER MENŞETLER DAHİL, ELEKTRİK DÜĞMESİ, FİŞİ VE PRİZİ HARİC)

MANUFACTURING OF PARTS OF SPECIFIC DEVICES FOR SWITCHING, PROTECTION OF ELECTRICAL CIRCUITS AND CONTROL AND DISTRIBUTION OF ELECTRICITY (INCLUDING OTHER SUPPORTS FOR CONTROL PANEL, TABLE, CONSOLE, CABIN, ETC., EXCLUDING ELECTRICAL SWITCH, PLUG AND SOCKET)

IAF Kodu: 06

This certificate is valid only when the above mentioned Company meets the requirement of Information Security Management System.

This is to certify that the above mentioned Company meets the requirement of Information Security Management System.

Belge No / Certificate Number	: MTS-33511
İlk Kayıt Tarihi / Date of Initial Reg.	: 23.10.2023
Yeniden Tanıtım Tarihi / Date of Recertification	: 23.10.2023
Geçerlilik Tarihi / Date of Expiry	: 23.10.2024
Yürürlükte Bulunan Belgelerin / SGM	: BÜYÜS.27.03.2023 REV00

This certificate is valid until the end of the three-year certification period if the organization complies with the certification requirements and the surveillance audits to be carried out at least once a year are completed successfully.

Resmi görevi içindeki işleri doğrultusunda yetkili temsilci olarak görev yapmaktadır.

Responsible for the company within the scope of his/her duties.

General Manager / General Manager

SİGMACERT GLOBAL GÜZETİM BELGELENDİRME GÜTİM ANONİM ŞİRKETİ

© Büyükdere Mahallesi Sarıyer Bulvarı Sigmat Business Plaza Blok No: 10/22 - 24 - 26 Etiler/Beşiktaş/İSTANBUL
www.sigmacertglobal.com.tr | info@sigmacertglobal.com | +90 312 381 08 00

İçerdiği tüm hakları saklı tutulmuş ve değiştirilmeden kullanılabilir. Bu belgeyi kullanırken lütfen Sigmacert Global'in gizlilik politikasını okuyunuz.
All rights reserved. This certificate is valid only when the above mentioned Company meets the requirement of Information Security Management System. The validity of the certificate can be checked on the Signacert Global's website.




SQR CERTIFICATION



Sertifika

CERTIFICATE

KTS KABELBAUM TEST SİSTEMLERİ ANONİM ŞİRKETİ

CERRAH MAH. 3. SANAYİ CAD. NO: 5 İNEĞÖL/ BURSA/ TÜRKİYE

ISO 9001:2015

Kapsam/Scope

ELEKTRİK DEVRELERİNİN ANAHTARLANMASI, KORUNMASI VE ELEKTRİĞİN KONTROL VE DAĞITIMINA ÖZGÜ CİHAZLARIN PARÇALARININ İMALATI (KUMANDA PANOSU İÇİN TABLO, KONSOL, KABİN VE DİĞER MENŞETLER DAHİL, ELEKTRİK DÜĞMESİ, FİŞİ VE PRİZİ HARİC)

MANUFACTURING OF PARTS OF SPECIFIC DEVICES FOR SWITCHING, PROTECTION OF ELECTRICAL CIRCUITS AND CONTROL AND DISTRIBUTION OF ELECTRICITY (INCLUDING OTHER SUPPORTS FOR CONTROL PANEL, TABLE, CONSOLE, CABIN, ETC., EXCLUDING ELECTRICAL SWITCH, PLUG AND SOCKET)

IAF Kodu: 19

This certificate is valid only when the above mentioned Company meets the requirement of Quality Management System.

This is to certify that the above mentioned Company meets the requirement of Quality Management System.

Belge No / Certificate Number	: MTS-33510
İlk Kayıt Tarihi / Date of Initial Reg.	: 23.10.2023
Yeniden Tanıtım Tarihi / Date of Recertification	: 23.10.2023
Geçerlilik Tarihi / Date of Expiry	: 23.10.2024

This certificate is valid until the end of the three-year certification period if the organization complies with the certification requirements and the surveillance audits to be carried out at least once a year are completed successfully.

Resmi görevi içindeki işleri doğrultusunda yetkili temsilci olarak görev yapmaktadır.

Responsible for the company within the scope of his/her duties.

General Manager / General Manager

SİGMACERT GLOBAL GÜZETİM BELGELENDİRME GÜTİM ANONİM ŞİRKETİ

© Büyükdere Mahallesi Sarıyer Bulvarı Sigmat Business Plaza Blok No: 10/22 - 24 - 26 Etiler/Beşiktaş/İSTANBUL
www.sigmacertglobal.com.tr | info@sigmacertglobal.com | +90 312 381 08 00

İçerdiği tüm hakları saklı tutulmuş ve değiştirilmeden kullanılabilir. Bu belgeyi kullanırken lütfen Sigmacert Global'in gizlilik politikasını okuyunuz.
All rights reserved. This certificate is valid only when the above mentioned Company meets the requirement of Information Security Management System. The validity of the certificate can be checked on the Signacert Global's website.





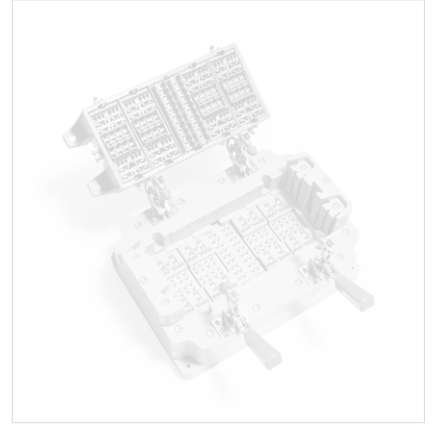
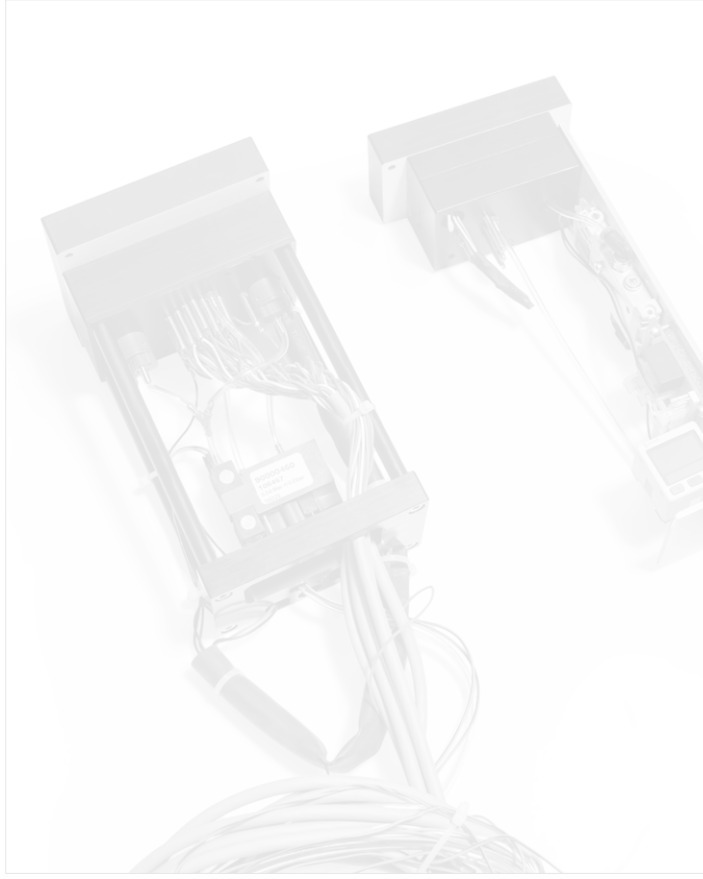

KTS
KABELBAUM TEST SYSTEMS

Thank You For Reviewing
Our Products

Note

Date: / /





kts

KABELBAUM TEST SYSTEMS



KTS Kabelbaum Test Sistemleri A.Ş.
Cerrah Mah. 3.Sanayi Cad.No:5 İnegöl/BURSA
P: +90 224 714 07 76 M: info@ktsistem.com
W: www.ktsistem.com

